



# DISASTER BY THE BAY 2015 EXERCISE PLAN

**SEPTEMBER 11, 12, 13, 2015**

PREPARED BY:  
Gale Foss, Central Coast CERT Program Manager/Instructor/Vice President  
And  
David Ramsey, Central Coast CERT Program Manager/Instructor/President

7/14/2015 8:19 PM



## ***CENTRAL COAST CERT ASSOCIATION***

**PRIMARY CONTACT:** David Ramsey, (831) 383-3135, [centralcoastcert@yahoo.com](mailto:centralcoastcert@yahoo.com)

**MISSION STATEMENT:** The Central Coast CERT Association is a volunteer emergency organization that provides assistance to the Central Coast, Monterey County OES, and emergency management services in case of natural disasters, terrorism, public health issues, and other emergencies – and to help our communities be safer. Team members promote, educate and provide skills, which enable citizens to protect themselves, their families, homes and business community.

**EXECUTIVE SUMMARY:** The objectives of this exercise are to evaluate the skill level of our CERT teams, perform CERT functions smoothly, independently follow the CERT Incident Command System, and complete assigned tasks in a realistic simulated disaster setting.

### **EMERGENCY RESPONSE PROCEDURES:**

#### **I. INITIAL RESPONSE:**

CERT members will respond to the incident location at the SAR Site, Marina, CA, (see Attachment B) and the Monterey Peninsula Regional (MPR) Staging Area, CSU Monterey Bay, Seaside, CA (see Attachment C). Participants will register and stage for assignment.

II. CERT Incident Command (CERT-IC) will be established at the SAR Site. Safety briefing and scenario overview will be given and teams will be assigned to each drill location.

III. COMMUNICATION among CERT teams will be with their respective radio systems (Commercial, Amateur Radio, FRS, etc.) utilizing HAM radio operators between SAR Site (CERT-IC), MPR Staging Area, and other facilities. CERT-IC will be responsible for creating a communications plan.

#### **IV. IDENTIFICATION OF TEAM LEADERS:**

The CERT teams will be led by CERT instructors or designated team leaders, who will also serve as the Safety Officer.

#### **V. LOGISTICS:**

CERT trailers and designated resource vehicles will be taken to each drill location, as needed. CERT members will also bring and utilize their own equipment. Water and restroom facilities will be provided. Saturday breakfast (831Shooter - free) and lunch (SAR Site) will be available for a donation of \$10 per person, paid with application and to Central Coast CERT. The lunch proceeds will go to a local Girl Scout Troop, who will be serving. Central Coast CERT will make sure team vehicles/trailers parked at the SAR Site will be secure overnight.

#### **VI. PLANNING:**

If you have any special needs please contact David Ramsey, our primary contact.

**VII. ADMINISTRATIVE:**

CERT forms will be used and turned into the appropriate section leader for inclusion into the After Action Report.

**DOCUMENTATION PROCEDURES:**

I. **CALLOUT SYSTEM:** CERT members will report to the SAR Site on Saturday morning, Sep 12<sup>th</sup>, in the Marina area for the orientation, set-up, and first drill assignments (see Drill Schedule).

II. **PERSONNEL RECORDS:** David Ramsey will have necessary documentation for participating Central Coast CERT members. Other CERT team coordinators will have necessary documentation for their participating CERT members. Other Participants will include invited agencies that will be responsible for their own personnel record keeping.

**III. RESPONSE ASSIGNMENT PROTOCOL:**

**TIERED RESPONSE:** CERT members will sign-in and then be assigned to a team. As the event unfolds, more CERT teams will be deployed and given an assignment by CERT-IC staff.

**IV. LOGISTICS/SUPPLIES:**

Each CERT member will be furnishing their own food and be self-sustaining for the drills, except for Saturday, where lunch will be available (SAR Site) for a donation of \$10 per person, paid with the application and to Central Coast CERT. The proceeds will go to a local Girl Scout Troop, who will be serving. Water and restroom facilities will be provided. Each CERT member will bring whatever tools they have available to use. The tools in CERT trailers will be checked out by the appropriate team personnel. CERT members will use their own equipment/tools. Each CERT team member will be responsible for their own equipment/tools.

**V. DOCUMENTATION PROTOCOL:**

**ICS Forms:** The Central Coast CERT will have ICS forms available, which will be used by all CERT members to track the events they are responsible for during this drill. Copies of the forms will be distributed to the ICP.

**EQUIPMENT/SUPPLIES:**

Most CERT members will have wrenches, hammers, duct tape, marker pens, flashlights, rope, and other assorted equipment/tools in their bags. Central Coast CERT will provide equipment and supplies for the ICP and the MPR Staging Area.

**TEAM SAFETY:**

Each CERT Team Leader will also serve as the Safety Officer for their team. Those who are not physically able to lift or carry will be assigned as scribes or other positions as needed for the various teams. A CERT team safety plan has been developed and is attached to this document. (Attachment A)

**OBJECTIVE:**

To provide functional and realistic disaster exercise scenarios using

1. CERT Sizeup

2. Damage Assessment
3. Light Search and Rescue
4. Victim Triage and transfer to Treatment Area
5. Incident Command System
6. Communications
7. Teamwork Safety

**DATE/TIME:**

September 11-13, 2015 (please see Drill Schedule for times)

**LOCATION:**

SAR Site, 5<sup>th</sup> St./Quartermaster Ave., Marina, CA. (Attachment B)

MPR Staging Area, 4544 A St., CSU Monterey Bay, Seaside, CA. (Attachment C)

**DRILL MATERIALS:**

All personal assigned CERT gear and equipment, response vehicles/trailers and team equipment.

**PARTICIPANTS:**

CERT Coordinators/Instructors

CERT Volunteers (including invited agency personnel)

CERT Ham Amateur Radio Operators (including OA ARES)

Other First Responders

**PARTICIPANT TRAINING OBJECTIVES:**

1. Equipment: Demonstrate the skills and knowledge of CERT teams to inventory and deploy available equipment.
2. Test deployment and efficient set up of ICP, Damage Assessment, Search and Rescue, Triage/Treatment, and Safety.
3. Communications: Test CERT personnel on deployment of communications equipment and the use of such equipment.
4. Test the deployment and skill level of CERT teams to accomplish and document assignments.

**SCENARIO:**

The Monterey Bay area has experienced a 7.1 earthquake on the San Gregorio fault zone, which lies off shore in a North/South direction in Monterey Bay. The local Law and Fire Agencies are over-whelmed with emergency and evacuation efforts. The Monterey County Emergency Operations Center has been activated. The EOC has advised that due to the size of the disaster and complications with transportation, all professional First Responders are unavailable for response. There is moderate damage to structures, infrastructure is out of commission, the likelihood of multiple victims needing medical attention, and no communications network. The EOC has requested that CERT be activated to assist the agencies that are in need of help. The EOC directs CERT to deploy to the SAR Site in Marina, for a Disaster Response Team Assignment.

INTENTIONALLY LEFT BLANK

## DRILL SCHEDULE

### ***Friday, Sep 11<sup>th</sup>***

0800 Site Setup – SAR Site

### ***Saturday, Sep 12<sup>th</sup>***

0600 Free Breakfast @ 831Shooter, 455-C Reservation Rd, Marina, CA  
(831-883-3307)

0800 Morning Drill Sign-in

0830 Safety Briefing - Scenario Overview

0845 Start of Morning Drill

1200 End of Morning Drill

1215 Hot Wash

1230 Lunch Break & Vendors

1330 Deploy to MPR Staging Area (LZ)

1345 Safety Briefing

1400 Air Ambulance Training

1530 Hot Wash

### ***Sunday, Sep 13<sup>th</sup>***

0800 Vehicle/Trailer Pickup

INTENTIONALLY LEFT BLANK



**ATTACHMENT A**

DISASTER BY THE BAY  
CERT TEAM SAFETY PLAN

**SEPTEMBER 11, 12, 13, 2015**

PREPARED BY: Gale Foss, Central Coast CERT Program Manager/Instructor  
And  
David Ramsey, Central Coast CERT Program Manager/Instructor/President

**EMERGENCY INFORMATION:**

In the event of any REAL EMERGENCY, it is extremely important for all staff and volunteers to remain calm, think clearly about what can be done to minimize injuries to participants, and to act safely. The CERT Incident Commander and Fire Department Personnel have considered and discussed various emergency scenarios, have specialized training and will be part of an emergency communications network.

Each CERT Team Leader will also serve as the Safety Officer for their team. It will be their responsibility to make sure that the participants are doing the assignment safely to prevent any type of injury to themselves or others.

In the event the Safety Officer sees something being done unsafely, they are to stop the action, tell the participants what they are doing unsafely, and have everyone think about what they should be doing before the action continues. When the Safety Officer is satisfied, everyone will continue the assignment safely.

In the following pages, appropriate staff behavior in various situations is discussed. It is important to remember that Fire Department personnel will be on site to assist with any accident or medical emergency that might arise.

**A. MEDICAL EMERGENCY OR INJURY:**

In the event of any accident, injury or illness whether minor or serious:

1. THE TEAM SAFETY OFFICER WILL IMMEDIATELY STOP THE DRILL BY SAYING **“MAD DOG”** OVER THE RADIO AND NOTIFY THE CERT INCIDENT COMMAND THAT THERE IS A PROBLEM. Be sure to explain where the ill or injured participant is located and what appears to be the problem.
2. The CERT Incident Command will immediately notify Fire Department personnel at the appropriate drill location and/or **dial 9-1-1**.
3. DO NOT MOVE AN INJURED PERSON UNLESS ABSOLUTELY NECESSARY.
4. If necessary, and you are qualified, initiate first aid or CPR. If you are not qualified, get another qualified individual to initiate first aid or CPR. IF YOU DON'T KNOW WHAT YOU'RE DOING, DON'T DO IT.
5. Assist emergency personnel in any manner requested. In most cases, this will be to STAY OUT OF THE WAY of emergency personnel.

**B. SEARCH AND RESCUE SAFETY:**

1. AVOID BACK INJURIES WHEN LIFTING OR CARRYING VICTIMS DURING THE DRILL. No backpacks in the building. Place them outside the building. Make sure your backpacks are labeled.
2. Make sure there are at least 6 people (3 on each side) when trying to carry another person (lifting with a blanket or using a backboard).

3. Make sure when lifting that everyone lifts at the same time and lift with your legs, not your back. Have one person at the patient's head in control and count so that everyone lifts at the same time.
4. Reverse the procedure when laying the person back down after you have moved them.

### **C. CRIBBING:**

1. Always make sure you perform the cribbing safely and stay outside of the object.
2. After you have started to lift the object, then put your blocks under the sides of the object.
3. Under no circumstances put your hands or feet under the edge of the object being lifted.
4. Apply your leverage on the pry bar with your body not your back.
5. In removing whatever is under the object, drag it out without putting your hands under the object to grab it.
6. In removing the cribbing, use other pieces of wood or something else to remove it. Do not reach under the object to grab it.

### **D. PHYSICAL HEALTH:**

1. If you have a physical or medical condition and are unable to do any of the activities, please let the CERT Incident Command know. You will be assigned a task you can do.
2. Do not do anything you are not physically able to do.
3. Drink plenty of water. Water will be provided.
4. If you are tired, let your team leader know and take time out to rest. We will have a break for lunch but if you get tired sooner it is ok to sit down and relax.

INTENTIONALLY LEFT BLANK

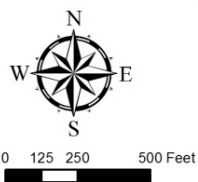
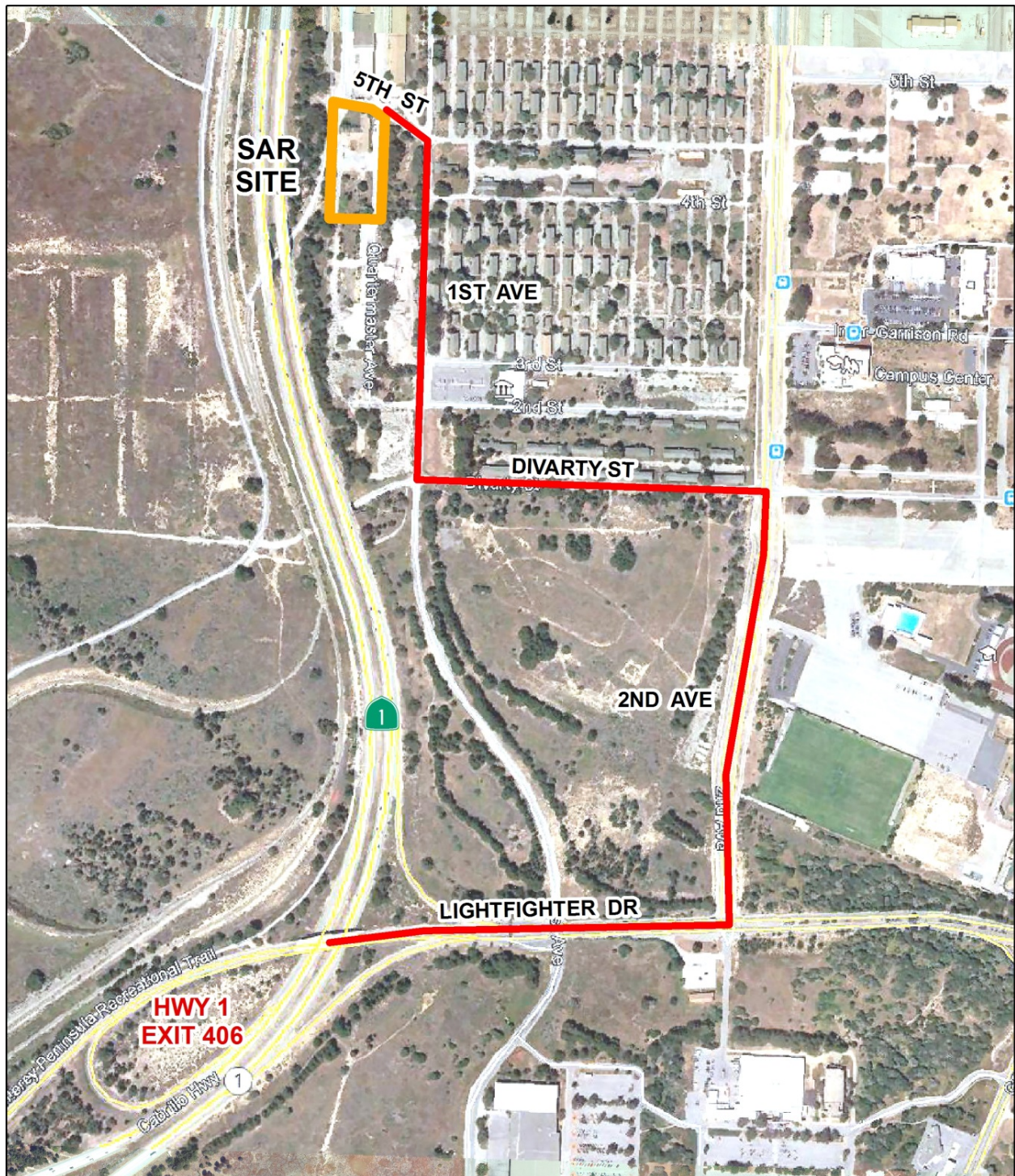
## **ATTACHMENT B**

# DISASTER BY THE BAY EXERCISE MAPS

**SEPTEMBER 11, 12, 13, 2015**

PREPARED BY: Gale Foss, Central Coast CERT Program Manager/Instructor  
And  
David Ramsey, Central Coast CERT Program Manager/Instructor/President





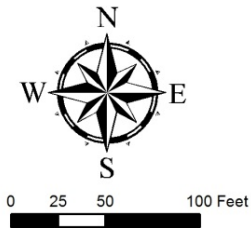
07/14/2015

# **Disaster By The Bay**

## **SAR Site Location Map**







07/12/2015

# Disaster By The Bay

## SAR Site

(Quartermaster Ave at 5th St, Marina)



INTENTIONALLY LEFT BLANK

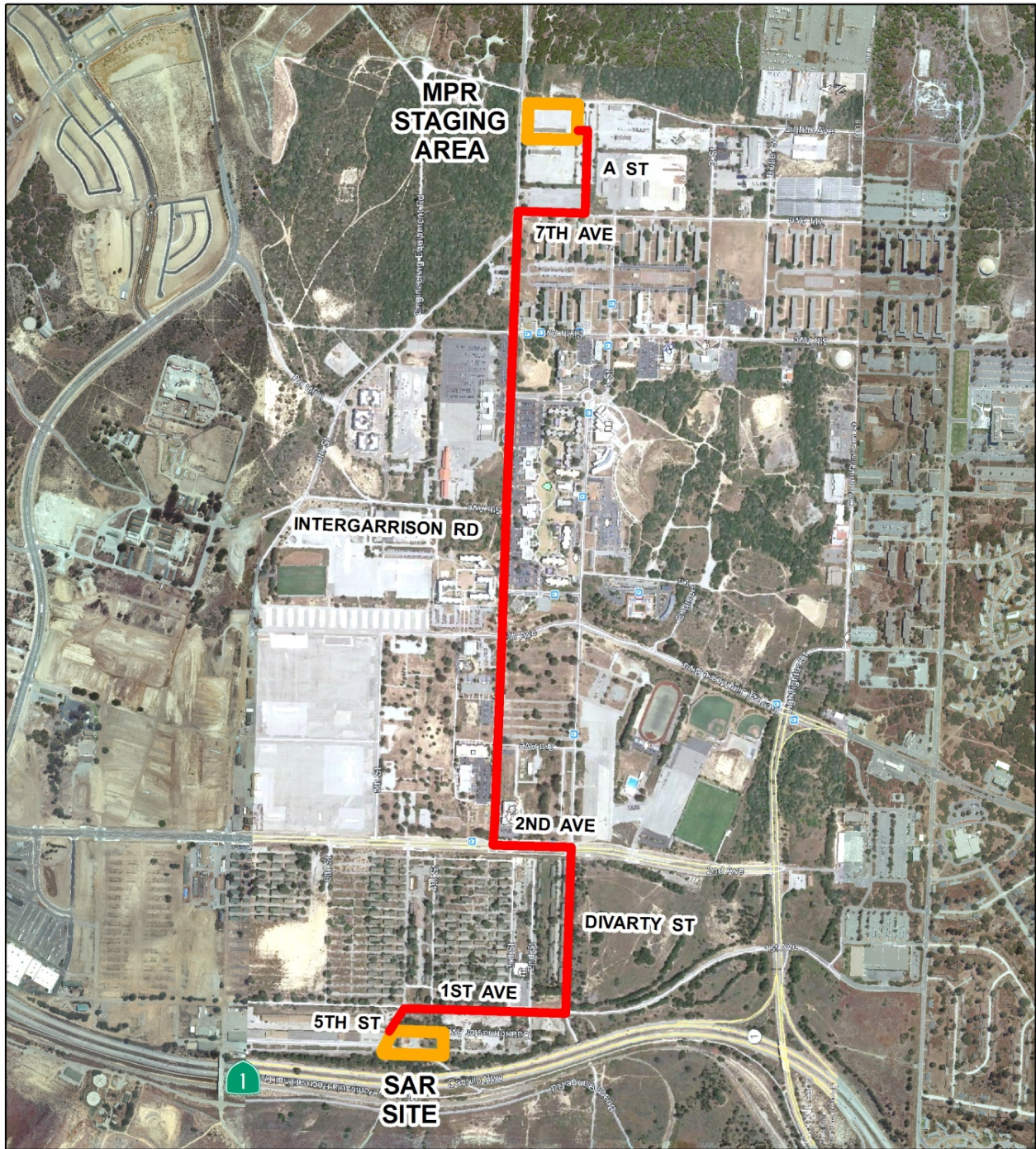


## **ATTACHMENT C**

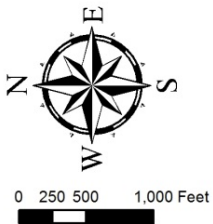
# DISASTER BY THE BAY MPR STAGING AREA MAPS

**SEPTEMBER 11, 12, 13, 2015**

PREPARED BY: Gale Foss, Central Coast CERT Program Manager/Instructor  
And  
David Ramsey, Central Coast CERT Program Manager/Instructor/President



07/14/2015



# **Disaster By The Bay**

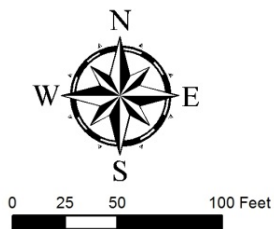
## **SAR Site to Staging Area**







07/12/2015



# Disaster By The Bay

## MPR Staging Area

